

Complete Patagonia - Paine & Fitz Roy, Chile & Argentina

The best day walks in the Torres del Paine and Los Glaciares National Parks.



Group departures

See overleaf for departure dates

Holiday overview

Style	Walking
Accommodation	Hotels, Eco Camp
Grade	Moderate
Duration	16 days from London to London
Trekking / Walking days	Walks on: 7 days
Min/Max group size	5 / 12. Guaranteed to run for 5
Trip Leader	Local Leader Patagonia
Land only	Joining in Santiago, Chile
Max altitude	Max Altitude 2,800m/9,187ft, San Francisco Glacier, Day 3

Private Departures & Tailor Made itineraries available



tel: +44 (0)1453 844400 fax: +44 (0)1453 844422 info@mountainkingdoms.com www.mountainkingdoms.com

Mountain Kingdoms Ltd, 20 Long Street, Wotton-under-Edge, Gloucestershire GL12 7BT UK
Managing Director: Steven Berry. Registered in England No. 2118433. VAT No. 496 6511 08

Departures

Group departures

2024 Dates:

Mon 11 Mar - Tue 26 Mar

Mon 21 Oct - Tue 05 Nov

Mon 25 Nov - Tue 10 Dec

Deposit and payments

A higher deposit is required to secure your booking on this holiday. For full details please contact the office or refer to our terms and conditions on our website <http://www.mountainkingdoms.com/essential-information>.

Group prices and optional supplements

Please contact us on +44 (0)1453 844400 or visit our website for our land only and flight inclusive prices and single supplement options.

For single travellers who are willing to share:

Please note that single supplements are only available for hotels and the supplement price does not include the Eco Camp. Whilst happy to accommodate single travellers on a twin share basis, in the event that there is no one for you to share with at the Eco Camp Standard Domes we will do our best to accommodate you with a member of the same sex from another party or on a triple sharing basis with two members of the same sex in a Suite Dome (at no extra charge). If neither of these options is available at the time of booking, we will contact you to discuss alternative arrangements.

No Surcharge Guarantee

The flight inclusive or land only price will be confirmed to you at the time you make your booking. There will be no surcharges after your booking has been confirmed.

Will the trip run?

This trip is guaranteed to run for 5 people and for a maximum of 12. In the rare event that we cancel a holiday, we will refund you in full and give you at least 6 weeks warning. Many trips do fill up quickly - we advise you to book early if you want to secure a place(s) on the dates of your choice.

Insurance

We offer a travel insurance scheme - please contact us for details.

Private Departures

We can also offer this trip as a private holiday. A Private Departure follows exactly the same itinerary as the group departure but at dates to suit you (subject to availability) - please contact us with your preferred dates.

Tailor Made service

We pride ourselves on the level of quality and choice we provide for our clients who want a fully tailor made holiday. A holiday will be created especially for you by one of our well-travelled experts. They will be able to advise on the accommodation best suited to your needs, the sights you should visit (and those to avoid!) and the best walks and activities matched to your ability. In short, we will work together with you to create your perfect holiday. If you would like to explore the idea of a Tailor Made holiday with Mountain Kingdoms then please call us on +44 (0)1453 844400 or see the Tailor Made pages of our website for further inspiration.

Your guide



We use expert, English-speaking local guides who have an intimate knowledge of the area and an infectious passion for nature. They are very hard-working, attentive and helpful. You will have separate leaders for the Santiago, Torres del Paine and Argentinean elements of your trip.

Special notes

Booking time

Due to the high demand for accommodation at the award-winning EcoCamp in the Torres del Paine National Park, we strongly recommend that you book your place/s on this holiday at least three months in advance.

Your trip highlights

- Enjoy seven days of excellent walking taking in all the highlights of the spectacular Torres del Paine and Los Glaciares National Parks
- Walk to the base camps of Mount Fitz Roy and Cerro Torre in Los Glaciares and along the French Valley and Lazo Weber Trail in Torres del Paine
- Visit the breathtaking Perito Moreno Glacier
- Stay in high quality accommodation throughout including the award winning Eco Camp in the Torres del Paine
- Discover Santiago with a city tour and enjoy a day walk in the Andes to San Francisco Glacier

At a glance itinerary

Days 1-2	Arrive Santiago. Afternoon city tour.
Day 3	Drive to Maipo Valley, walk to San Francisco Glacier and Morado Lagoon.
Days 4-5	Fly to Punta Arenas. Drive to Puerto Natales. Catamaran ride to Puerto Torres. Walk to view Serrano Glacier and return by catamaran to Puerto Natales.
Days 6-7	Trek to Las Torres lookout and walk the Lazo Weber Trail.
Days 8-9	Catamaran across Lake Pehoe to roadhead. Trek along French Valley. Transfer to Cerro Castillo. Cross the border, drive to El Calafate.
Day 10	Visit Perito Moreno Glacier. Transfer to El Chalten.
Day 11	Trek to Loma Del Pliegue Tumbado.
Days 12-13	Fitzroy Base Camp walk. Day walk to Laguna Torre.
Day 14	Transfer to El Calafate. Fly to Buenos Aires.
Days 15-16	Morning in Buenos Aires. Transfer to airport and fly to London.

Trip summary

This superb holiday has been especially designed to treat you to all the highlights of Patagonia's Torres del Paine and Los Glaciares National Parks. Through a series of varied day walks you will see dramatic rock spires, massive glaciers, dazzling icebergs, turquoise lakes and snow-capped summits; in fact, the best that Patagonia has to offer. The flora and fauna are no less unique and intriguing. You will share terrain with grazing guanacos, nandus, soaring condors, cormorants, sea lions, Black-necked Swans, lenga forest and the indigenous Calafate bush.

Your journey begins in Santiago, Chile's vibrant capital, before flying south to spend four full days in the Torres del Paine staying in the stunningly located Eco Camp. Highlights of your walking here include the Las Torres trail to view the iconic Paine Towers and a hike along French Valley. Crossing into Argentina you'll visit the Perito Moreno Glacier and enjoy several walks in the pristine landscape of the Los Glaciares National Park including day hikes with close up views of Mount Fitz Roy and Cerro Torre. Flying back to Buenos Aires, your travels end in one of the most cosmopolitan of all South American capital cities where you can extend your stay if you would like.

Although some (though certainly not all) of the day walks include a fair bit of ascent and descent, this trip is graded as moderate with the comfort of overnight stays in good standard hotels and the superb Eco Camp. Unique in Patagonia, this camp has been operating in its current location within the Torres del Paine National Park since 2005 and is a complex made up of geodesic domes. Large domes house the dining room, a bar, lounge and relaxation areas, with smaller sleeping domes reached via a network of wooden boardwalks. Built over a wooden floor the strong canvas domes are built to withstand all weathers.

Your trip itinerary

Day 1: Fly London to Santiago

Fly overnight from London to Santiago in Chile.

Overnight: In flight

Day 2: Arrive Santiago. Group transfer to hotel. Afternoon city tour.

Flights from the UK usually land in Santiago in the morning. Upon arrival at Santiago airport you will be met and transferred to your hotel.

Later this afternoon you will be picked up from your hotel and driven downtown to the Plaza de Armas, the historical centre of Santiago. The most famous sights here are the Metropolitan Cathedral and the Central Post Office which was originally built as a house for the Spanish conqueror Pedro de Valdivia. On the northern side of the square you will see the neoclassical Tribunales de Justicia building which houses the Supreme Court, ex-parliament and some beautiful gardens.

From the Plaza you will be driven towards Alameda, the main street in the city centre, and to the Presidential Palace - Palacio La Moneda. A model of 18th century colonial architecture, the palace is one of Santiago's most famous landmarks and a symbol of Chile's turbulent political past as well as its independence. From here you will go to the Lastarria district and climb Cerro Santa Lucia - the hill where Pedro Valdivia founded Santiago in 1541. There are great panoramic views of the city from the top. Afterwards you return to Lastarria and travel through this cosmopolitan neighbourhood lined with cafes, restaurants, shops, bookstores and small theatres. At the end of the tour you will be driven back to your hotel.

In the evening there will be a welcome dinner with your fellow travellers before retiring for the night.

Overnight: Hotel 45 or Similar, Santiago (Meals: D)

Day 3: Drive to Maipo Valley - 95km, 1 hour. Walk to San Francisco Glacier, 2,800m/9,187ft- 600m/1,968ft of ascent, 4-5 hours.

After breakfast, you will be met at your hotel and driven across the Maipo Valley and towards the Andes, a drive of just under 100km which will take around an hour. The grand metropolis of Santiago quickly fades behind you once you reach the countryside. Along the way, local country families come out to the street to sell "Empanadas" and "Pan Amasado", the most typical country meal, together with honey, homemade marmalade and wooden handicrafts.



Your destination is the El Morado Reserve - nestled at the foot of a towering mountain cirque, with some of the most dramatic rock formations in South America. You leave your vehicle at the small mountain town of Banos Morales located at an altitude of 1.900 meters above sea level. The straightforward pathway from the town gradually ascends to the impressive San Francisco Glacier at 2,800 metres, and to Morales Lagoon, also of glacial origin. On the way you will have a refreshing stop at "Aguas de Panimávida", where water, enriched by minerals, springs directly from the ground.

When you reach Morales lagoon you will have a leisurely break - enjoying your boxed lunch whilst admiring the stunning views of the lagoon and the surrounding El Dorado and San Francisco mountain ranges - both rising to above 5,000m. It's also a great spot to look for native birds and flora. Well rested, you make the return hike to your vehicle and then drive back to your hotel in Santiago. En route, there is one last treat, when you stop at Cascada de las Animas for a local barbeque (asado). A delicious end to the day!

Overnight: Hotel 45 or Similar, Santiago (Meals: BLD)

Day 4: Fly to Punta Arenas - 4 hours. Drive to Puerto Natales - 250km, 3 hours..

You will be met at your hotel and transferred to the airport for the flight to Punta Arenas, via Puerto Montt (where the aircraft will stop for 20 minutes or so while you remain on the plane). Try to request a seat on the left hand side of the plane because, good weather permitting, you will have awesome views of the Patagonian Andes and see the Torres del Paine which you will be trekking so close to in a few days' time. You will also have a bird's eye view of many stunning lakes and glaciers. It is interesting to contrast the lush scenery around Puerto Montt with the parched landscape close to Santiago.

You will be met at Punta Arenas airport, and driven northwards to Puerto Natales. Here you will probably notice the change in temperature. After approximately 3 hours driving, you arrive at the quaint town of Puerto Natales on the edge of Last Hope Sound. You meet your guide at the hotel, and the rest of the day is free to explore this picturesque town.

Overnight: Martin Gusinde Hotel or Hotel Veat, Puerto Natales (Meals: B L)

Day 5: Catamaran to Puerto Torres - 4 hours. Walk to view Serrano Glacier then sail back to Puerto Natales. Drive to Eco Camp.

Today you will rise early for your transfer to Natales dock in time to board the catamaran. You will be treated to a visual feast of mountains, fjords, ice caps, and glaciers, soaring condors, guanacos grazing on the hillside and the stunning Torres del Paine. Make sure you wear warm clothes as you will undoubtedly wish to spend most of your time on deck. You progress up the Canal Señoret and reach the mouth of the Fiordo Eberhard after about one hour. This is where cattle ranching was started in the Ultima Esperanza area in 1887 by the German Captain Eberhard. You then begin sailing along the Fiordo Ultima Esperanza. You have excellent views of the mountain Balmaceda, 2,035m/6,676ft, which becomes more spectacular as you progress.

After about two hours of sailing, the boat will slow as you approach the cormorant colony and you will undoubtedly get some good photographs of these birds. You may well see sea-lions and the cisne de cuello negro (Black-necked swans) as well as condors nesting in the dramatic cliff face.

After about four hours of sailing in total, the boat docks at Puerto Torres, where a 15 minute or so walk brings you to the base of the impressive Serrano Glacier. Photos taken, you return to the catamaran and sail back to Puerto Natales. You will then be transferred to the Eco Camp for your first night in the spectacular Torres del Paine National Park.

Please note that the catamaran sailing is dependent on weather conditions. If it is unable to sail you will be transferred by bus instead and you will be refunded for the boat trip when you return to the UK.

Overnight: Eco Camp, Torres Del Paine - Standard Domes (Meals: BLD)

Day 6: Trek to Las Torres lookout - 21km, 914m/2,998ft of ascent/descent, 8-10 hours.

Please note: the walks over the next three days may be switched around depending on weather conditions.

Today is a fairly long, but very rewarding day and, if the weather is clear, you will have awesome views of the 3 impressive granite towers of Paine. The trail is on a good path for the first 2-3 hours, and your last lookout point is on rocky, boulder-strewn terrain. However, navigation is made easy by the red blobs of paint strategically placed on the boulders. If the sun is out and there is not too much wind, it can be very hot so ensure you drink lots of water (there are many opportunities to fill up your bottle from streams).



You cross the Rio Ascencio on a suspension footbridge and head rightwards on a good, dusty track and continue uphill, levelling out as you traverse high above the rushing Rio Ascencio. You have fine views of Lago Nordenskjold as you glance backwards. After about 1½-2 hours walking (depending on your rest stops) you reach the Refugio Chileno - a very pleasant and well-kept refugio which sells drinks and snacks. It is also a good place for a water refill although you will have several opportunities to fill your water as you continue upwards along the stream.

Having left the refugio, you walk through the lenga forest for an hour or so until you reach a signpost for the Torres campsite. After following a stream for a while, the rocky moraine begins and you will be trekking uphill for roughly an hour before you reach the high point and fantastic mirador (lookout point) for the Towers of Paine at 900m/2,952ft.

You can perch on the large boulders here and enjoy your lunch whilst taking many shots of the dramatic 3 towers giving you time to contemplate the awesome feats of the climbers who have ascended these inspiring giants. It can be a very windy spot here so ensure you have your windproof clothing to hand. Descend the same way back to Las Torres.

Overnight: Eco Camp, Torres Del Paine - Standard Domes (Meals: BLD)

Day 7: Hike the Lazo Weber Trail - 12km, 5 hours.

You will start your day at 8:30am with breakfast at Eco Camp and a moment to prepare your boxed lunch before boarding the bus at 10am. Your ride takes you past the Lazo Weber Estancia where you'll enter the National Park via Laguna Verde and begin your 12km hike. The Lazo Weber Trail is packed with native flora and wildlife so have your cameras ready to snap photos of the guanacos, owls, eagles, condors and caranchos (another bird of prey), all with the mountainous Paine range on our right. The hike is relatively easy and apart from a few hills, the trail remains rather flat. You'll stop a moment to refuel by the magical Laguna Honda, and enjoy the sights and sensations of the gorgeous landscape and fresh breeze. On your way, you will hike through one of the quietest forests in the national park, a fantastic opportunity to observe native trees such as the Lenga and the Coihue.

The rest of your hike takes you to the El Toro lookout point where you'll be wowed with a 360 degree view of the Paine mountain range, the Patagonian Andes, and a suite of rivers and lakes including the Paine, Grey, and Serrano Rivers and Lake Toro - the largest in the region. An hour's descent towards Paine River will see you reunited with your bus. But before you go back to Eco Camp, you'll search for more animals to photograph and take a final moment to enjoy the scenery. At about 7pm, you'll arrive back at your 'dome sweet dome', ready to share in a tasty dinner and talk about your day hiking the Lazo Weber Trail.

Overnight: Eco Camp, Torres Del Paine - Standard Domes (Meals: BLD)

Day 8: Catamaran across Lake Pehoe to roadhead. Trek along French Valley - 575m/1,886ft of ascent/descent, 7-8 hours.

After breakfast you begin the day by driving to Pudeto dock on the shores of Pehoe Lake. There you board the catamaran that will take you to the northwest area of the lake from where you will begin your trek to Valle Frances (French Valley) - a steep trail that goes into the very heart of the Paine Massif. How far you go up the valley will depend on the inclination of the group.



First you reach the hanging bridge over the French River, at the foot of the southeast face of the massif from where you will enjoy your first wonderful view. You then continue up the trail until you reach the upper reaches of the valley at around 695m/2,280ft (an additional hour and a half return trip). From here you will have views of the whole group of geological formations of the high valley - Hoja (Blade), Mascara (Mask), Espada (Sword), Catedral (Cathedral), Aleta de Tiburon (Shark's Fin) and the magnificent Fortaleza (Fortress). You will have time here to sit and admire the view, eat your picnic and take a well-earned rest. For those with enough energy, there is also the option to trek to Mirador Britanico.

You return to the Paine Grande dock, descending through an undulating terrain of mixed grassland and light forest. You board the catamaran once again for your trip back to Pudeto. Return to Eco Camp.

Overnight: Eco Camp, Torres Del Paine - Standard Domes (Meals: BLD)

Day 9: Transfer to Cerro Castillo. Cross the border, drive to El Calafate - 284km, 4 hours.

You cross the border into Argentina today at the town of Cerro Castillo, from where you will be transferred to El Calafate. Calafate is the main town of Argentine Patagonia and home to the only airport in this vast region. The town is located on the edge of Lake Argentino and is the doorway to the outstanding natural wonders of

the Los Glaciares National Park. The main street of Calafate has many cafes, bars, shops and restaurants and is a very enjoyable place to spend an evening or two. In Calafate you will meet your Argentine guide.

Overnight: Hotel Lar Aike or Similar, El Calafate (Meals: B L)

Day 10: Full day visit Perito Moreno Glacier. Transfer to El Chalten - 220 km, 2½ hours.

After breakfast, a one hour's bus drive will take you to one of the world's most spectacular glaciers - the Perito Moreno. Upon arriving at the site, you will not go straight to the viewing platforms opposite the main face of the glacier, but instead, walk round to view the majestic splendour of the less frequented north face.



The snout of the glacier always has huge chunks of ice calving into the lake and if you are lucky you will witness the sight and sound of this amazing natural phenomenon. You will continue your walk along the shores of the lake and your guide will be able to tell you all about the formation of the glacier and explain the many features you will see. Arriving at the network of walkways and viewing platforms you will have time at leisure to enjoy the stunning views of the 60 foot high face of the glacier and undoubtedly take numerous photographs.

You will also get to experience this amazing sight but from a different angle, by taking to the water. The navigation of the Argentine Lake aboard the ' Brazo Rico' allows you to appreciate the ice floes of the Perito Moreno Glacier. Arriving at the southern end of the channel of the ice floes, the boat travels along the wall of the glacier and across the lake for great views of the calvings that take place.

After admiring this wonder of the natural world you will transfer by comfortable mini bus to the trekking town of El Chalten. The drive will take around three hours and, if the weather is clear, will provide your first views of the Fitz Roy massif as well as the turquoise waters of Lakes Viedma and Argentino.

Overnight: Hotel Lunajuim or Similar, El Chalten (Meals: B L)

Day 11: Trek to Loma del Pliegue Tumbado - 1,100m/3,608ft of ascent/descent, 8 hours.

Today you will trek to the lookout point - Mirador Loma del Pliegue Tumbado. This is a hard walk, on little visited trails, that leads to the western end of the Massif. Here you will have truly superb panoramic views of Cerro Torre and the peaks around Mount Fitz Roy. The maximum altitude reached is 1,490m/4,888ft at the mirador. However, as this is an out and back walk, you are free to walk up as high or as far as you wish.

Overnight: Hotel Lunajuim Or Similar, El Chalten (Meals: B L)

Day 12: Fitz Roy Base Camp walk - 350m/1,148ft of ascent/descent, 6-7 hours.

A short drive north will take you to Hosteria el Pilar, your starting point for this beautiful and classic walk in the Los Glaciares National Park. You will begin by meandering through beech woods and before long you will get your first views of the imperious Mount Fitz Roy and the glaciers and rivers that flow from it. As the landscape opens up before you, this view will become more expansive and dramatic. Eventually, you will reach Campamento Poincenot, 680m/2,230ft, one of the base camps where climbers wait out the weather before attempting to climb Fitz Roy or the other peaks in the massif. Your path now continues southwards before a short detour takes you to beautiful Lake Capri where you can enjoy even more panoramic views of the mountains. Returning to the path you walk across open ground, beside high cliffs, before descending into the Vueltas River Valley and back to El Chalten.

Overnight: Hotel Lunajuim or Similar, El Chalten (Meals: B L)

Day 13: Day walk to Laguna Torre, 230m/755ft of ascent/descent - 7 hours.

There will be another classic walk today. This time you will hike along the Cerro Torre Trail to Laguna Torre, a beautiful lagoon with the majestic backdrop of Cerro Torre. After breakfast you start the trek heading eastwards from El Chalten and follow the Fitz Roy River Valley along a good path until reaching the first lookout point (Mirador Laguna Torre) where you find great views of the Mount Torre-Adelas mountain range and

the magical spire of Cerro Torre - if the weather is kind. Your walk continues to de Agostini Base Camp (635m/2,083ft), temporary home to climbers of Cerro Torre and other peaks, and then on to Laguna Torre itself. This small lake is surrounded by rock moraine from Cerro Torre and you will see small icebergs floating across the surface. You will walk round the lake to enjoy the magnificent views and enjoy a picnic on the shores of the lake. Later you return to El Chalten by the same path and, upon reaching El Chalten, the evening is free to enjoy a delicious dinner at one of the town's many cosy restaurants.

Overnight: Hotel Lunajuim or Similar, El Chalten (Meals: B L)

Day 14: Transfer to El Calafate - 213km, 3-4 hours. Fly to Buenos Aires

Today, you will bid farewell to Patagonia and transfer to the airport at Calafate for your 3 hour afternoon flight to Buenos Aires. You will be met at Buenos Aires Airport by a local representative and transferred to your hotel - approximately a 50 minute drive from the domestic airport.

Overnight: Boca Hotel By Design Suites or Similar, Buenos Aires (Meals: B)

Day 15: Time at leisure. Group transfer to airport. Fly to London.

After breakfast, your morning will be at leisure before being transferred to the international airport in the afternoon for your flight back to London.

If you would like to spend more time in Buenos Aires to fully explore this fascinating and cosmopolitan city, we can arrange additional hotel nights.

Overnight: In flight (Meals: B)

Day 16: Arrive London.

Our grading system

Complete Patagonia - Paine & Fitz Roy is graded as a Moderate walking holiday, as described below.

Moderate

Holidays in this grade typically involve 5 to 10 days of walking or trekking. They will often venture into more remote country and can cross mountain passes. Altitudes though are still relatively low, going no higher than around 4,300m/14,000ft. Accommodation can include simple hotels, tea houses, lodges and camping.

What the price includes

Mountain Kingdoms aims to offer the best value for money. We do not charge extra for meal packages or apply local charges and try to ensure that all the key elements of your holiday are included.

What's included:

- ✓ Local English-speaking leaders
- ✓ All internal flights and domestic airport transfers
- ✓ Hotel accommodation in Santiago, Buenos Aires and Puerto Natales on a twin share basis
- ✓ 4 nights at the Torres del Paine Eco Camp in Standard Domes on a twin share basis
- ✓ 13 breakfasts, 11 lunches and 6 dinners are included
- ✓ All road transport by private vehicles
- ✓ Sightseeing where specified
- ✓ Economy class return air fares from the UK & UK Departure Tax (flight inclusive only)
- ✓ Single, timed, group airport transfers for international flights on arrival and departure
- ✓ Carbon offsetting with the Ecoan Tree Planting Project (for clients taking our flight inclusive option)
- ✓ A free Mountain Kingdoms Water-to-Go Bottle

Airport transfers

The cost of a transfer to/from the airport is included in the price of your holiday. This is a single group transfer which is arranged to coincide with the timings of the group flights. If you book your own flights which arrive/depart at different times to this, or we book flights at your request that have different timings, we will be happy to provide a quote for a separate transfer. Please contact us should you require any further information.

What's not included:

- × Travel insurance
- × Visa fees
- × Some meals (as specified in the detailed itinerary)
- × Optional trips
- × Tips

Water-to-Go Reusable Bottle Campaign

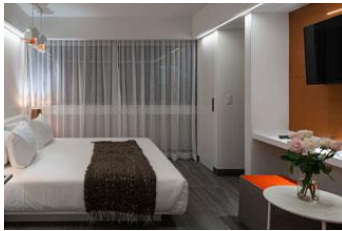
We have joined the campaign to help cut down on the use of plastics and, in particular, single-use water bottles. To do this we have teamed up with the revolutionary company, Water-to-Go who have developed a multi-use drinking bottle with a reusable filter that eliminates over 99.9% of all microbiological contaminants. This makes water from virtually any source safe to drink and significantly reduces the need for travellers to buy bottles of water wherever they are in the world.

Our clients who are not given a free Mountain Kingdoms kit bag for their holiday (these are required for certain treks), will instead receive a free Mountain Kingdoms Water-to-Go bottle. These unique Water-to-Go bottles can also be purchased from us at a discounted rate.

For further information about our campaign visit <https://www.mountainkingdoms.com/water-to-go-reusable-bottle-campaign>.

Your accommodation

We will endeavour to secure the hotels named in the itinerary but if our first choice of hotel is not available we will book a suitable alternative of a similar standard.



Hotel 45 or Similar, Santiago

This chic, contemporary hotel is around a 30 minute drive from the airport with a selection of shops and restaurants within easy walking distance. Rooms are light and bright with a good range of amenities including minibars and free Wi-Fi. The hotel has two bars and its own restaurant where a buffet breakfast is served.



Martin Gusinde Hotel or Hotel Veat, Puerto Natales

The Martin Gusinde is centrally located in Puerto Natales, close to the bay and main square where you will find a selection of shops, bars and restaurants. Rooms at this 3* hotel are spacious with good facilities including safety deposit boxes and free Wi-Fi. Alternatively we may use the Hotel Veat which is also close to the main square and has a similar level of facilities and comfort.



Eco Camp, Torres Del Paine - Standard Domes

Unique in Patagonia this camp has been operating in its current location within the Torres del Paine National Park since 2005. The complex is made up of various sized geodesic domes: large domes house the dining room, a bar, lounge and relaxation areas, with smaller sleeping domes reached via a network of wooden boardwalks. Built over a wooden floor the strong canvas domes are built to withstand all weathers and offer twin beds, all bedding, electric light and attractive decoration. In standard domes, bathroom facilities are shared, with toilets and showers housed in separate domes. 'Luxury' domes have en suite facilities - these are available at a supplement and are subject to availability.



Hotel Lar Aike or Similar, El Calafate

The Hotel is placed on the main avenue in El Calafate, overlooking Argentino Lake, a few minutes from downtown Calafate and surrounded by lush vegetation. Outstanding views of the lake and beautiful gardens which contrast with the barren Patagonian landscape, within a cosy and relaxed environment.



Hotel Lunajuim or Similar, El Chalten

The Hotel Lunajuim is tastefully furnished with a unique combination of elegance in a casual atmosphere. The hotel opened its doors in January 2001 and is located down town area of El Chalten. The hotel is ideally placed with a privileged view of the Fitz Roy and Torre peaks, near the start of the trekking trails. Its lovely large dining-living room, overlooking the Andes mountain range, with a fireplace and well-stocked library, makes you feel at home.



Boca Hotel By Design Suites or Similar, Buenos Aires

This contemporary, 4* hotel is situated in the heart of Buenos Aires within easy walking distance of several key attractions. Themed around the iconic colours and history of the Boca Juniors football team the hotel offers an indoor pool, spa and bar whilst rooms are bright and spacious with stylish modern décor and spa baths.

Meal arrangements

13 breakfasts, 11 lunches and 6 dinners are included.

Flight arrangements

Flight inclusive from price

Our 'Flight inclusive from' price is based on the best fare available at the time of printing. As airfares change on a constant basis, this should be used only as a guide price. Rest assured that, at the time of booking, we will endeavour to get the best possible price for the flights you need. Remember, the earlier you book the greater your chances of securing the best fare.

Flight inclusive packages booked through Mountain Kingdoms are protected through our ATOL bonding scheme.

Flight upgrades and regional Airports

Please call us on +44 (0)1453 844400 for flight options from regional UK airports, Business Class upgrades, alternative airlines and stopovers. Please also check our website for the most up to date flight inclusive 'from' prices.

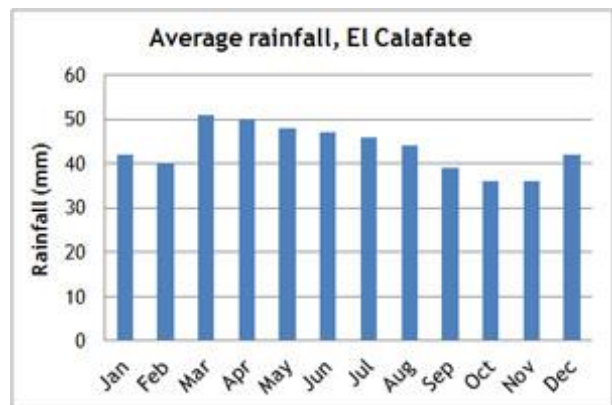
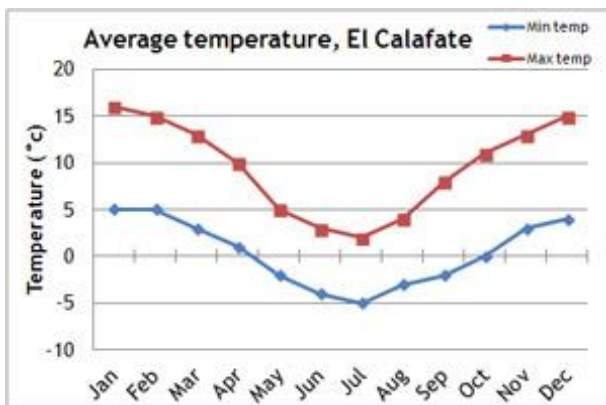
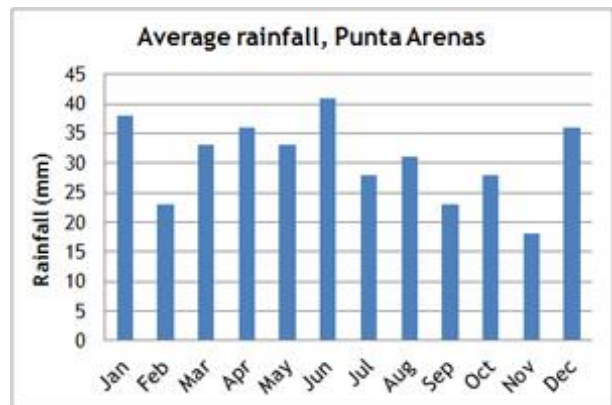
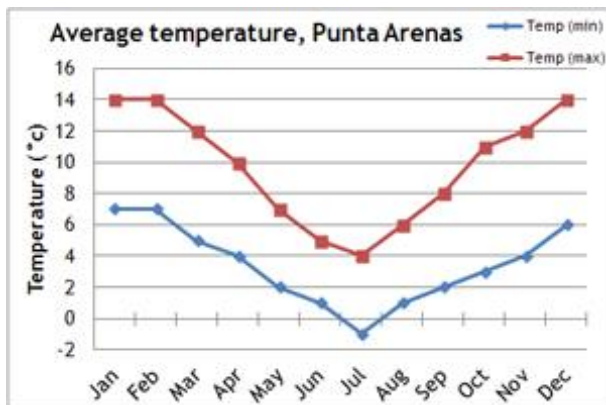
Further information

When we receive your booking, we send you a full Trip Dossier which contains details of any visas and vaccinations required, a suggested gear and clothing list and lots of useful information. If you do have queries at this initial stage do call us on 01453 844400 and we will be pleased to offer advice.

The nature of adventure travel

Every effort will be made to keep to this itinerary but we cannot guarantee that things may not change, either before you travel or while you are away. By its very nature, adventure travel involves an element of the unexpected, particularly in more remote areas. A variety of factors such as adverse weather conditions, changes to local schedules and difficulties with transportation can all contribute to the need to make changes to the itinerary, often at the very last minute. Our Operations Manager and your Trip Leader will make every effort to maintain the integrity of the original itinerary and minimise the impact of any changes, but an easy-going and flexible nature is a real asset! Please note that all timings and distances given are approximate.

Climate information



Extensions

Extending your holiday

If you would like additional inspiration on how or where to extend your holiday please call us on 01453 844400. Alternatively, you can download a range of extension information sheets on our website, at www.mountainkingdoms.com.



Extra hotel nights in Buenos Aires or Santiago

If you would like to see more of the vibrant Latin cities of Buenos Aires or Santiago we would be delighted to book additional hotel nights from our selection of accommodation. We can also assist with flight and hotel upgrades.



Iguazú Falls

Visit one of nature's most awe-inspiring sights on a 2 or 3 night extension to Iguazú Falls. Fly from Buenos Aires to Puerto Iguazú and visit both the Argentine and Brazilian sides of the Iguazú National Park in the company of an expert guide. Walk along the park's many trails that wind through rainforest, and feel the raw power of the falls from numerous viewing points. The extension includes accommodation in a good quality hotel in Puerto Iguazú, flights and all airport transfers.

Why book this holiday with Mountain Kingdoms?

- This superb trekking holiday has been designed to give you excellent walking that takes in all the highlights of the spectacular Torres del Paine and Los Glaciares National Parks.
- We use high quality accommodation throughout, and, in the Torres del Paine, stay at the award winning Eco Camp in Patagonia.
- We include a full day in Santiago at the start of your trip, to break up the long flight from the UK and provide a walk in the Andes.
- Our local guides speak very good English and have excellent knowledge and experience of the geology, flora and fauna in this unique geographical region.
- We have a wealth of experience in the company and staff members who have walked and trekked in Patagonia. If you have any questions about this trek, please give Niki Morgan a call.
- We offer a flexible service and can extend your holiday with extra hotel nights, upgrades and exciting activities.
- As part of our commitment to 'Tourism Declares a Climate Emergency', we will be carbon-offsetting all international flights booked through us by donating funds to the Ecoan Tree Planting Project in Peru.
- If you wish to fly with a specific airline, from a regional UK airport or on alternative dates to the main group we would be happy to arrange this for you. Please contact our Flights team for flight options, quotes and further information.

If we've tempted you to take your next holiday with us, we advise you to check availability and you can do this via our website: www.mountainkingdoms.com or by calling the team on +44 (0)1453 844400. Bookings can be made online, by phone or by completing a booking form and returning it to us. We can also provisionally hold places if you need time to consider your options.

What our clients say



This trip provides the opportunity to visit one of the most spectacular areas of the world, and see close up how spectacular the mountain ranges, glaciers, lakes and surrounding landscapes are. The scenery is incredible - and at times hard to take in - but I feel privileged to have been taken by expert guides to some of the most stunning landscapes I have ever seen. The treks can be challenging but they are worth the effort, and the welcome you receive at your hotel makes it all worthwhile.

-Susan, Edinburgh



Great treks taking in most of those classic Patagonian vistas. The tour was well organised, hotels exceeded expectations and the EcoCamp was magnificent. Tour guides were all friendly, helpful and knowledgeable. Would strongly recommend this trip for reasonably fit walkers.

-Mike G, Somerset

Stunning scenery; varied and well-paced walks interspersed with excellent sightseeing days; attentive and well informed guides; good accommodation; lots of laughs with a great group.

-Mr & Mrs J, Gloucestershire



Very well researched itineraries. Excellent trek leaders with good local knowledge. Reliable support infrastructure. Amazing choice of walks, hotels etc. A good balance between caring for the clients' needs, but also allowing them to enjoy the freedom of trekking.

-Ms H & Mr W, Midlothian

Always excellent accommodation, particularly the Eco Domes. The main guide was magnificent and knowledgeable, with a wonderful smile. . It was a superb holiday during which we had the chance to see some spectacular scenery in a lovely part of the world, in the company of a really wonderful guide, thank you.

-Mr & Mrs P, Dorset



Outstanding in every respect...fantastic guide, stunning scenery, great group, perfect weather, smooth logistics made this a holiday to cherish.

-Mr & Mrs F, Kent

This really is an amazing holiday. It involves quite a lot of travelling but it is so worth it. The scenery is absolutely stunning and the walks, though quite challenging, resulted in views to remember for ever. And, best of all, the people I was with made the holiday so enjoyable.

- Jackie



We were really excited to join our friends on this holiday but we could not have anticipated just how stunning the scenery was going to be, how challenging but satisfying the walks or how much we would learn about local history, geology, wildlife, flora and fauna. The travel arrangements were all superb and we felt extremely well looked after by Mountain Kingdoms.

-Ms L T, Bristol

Mountain Kingdoms - distinctly different

Truly independent

In an age where many so-called 'independent' travel companies have in fact been bought out by multi-national giants, we remain fiercely independent with all the benefits this offers our clients.

Value for money prices with an emphasis on quality

We are not in the business of cutting our itineraries and services to the bone to offer eye-catching cheap prices. We use some of the best airlines, and typically 3 or 4 star hotels in cities. We include the majority of meals and private transport for road travel. We use excellent equipment and appoint well-trained staff and leaders. Last year, over 98% of our clients rated their Mountain Kingdoms holiday as 'excellent' or 'good'. We are members of AITO and bound by their quality charter.

Complete financial security

You can book with us confident that your holiday has full financial protection. Flight inclusive holidays are financially protected by the Civil Aviation Authority under ATOL licence number 2973 and 'Land Only' holidays are covered by a bond secured with ABTOT.

No Surcharge Guarantee

Your peace of mind is important to us so we have a No Surcharge Guarantee on all Land Only and Flight Inclusive bookings. This means that there will be no change to the price of your holiday once we have confirmed your booking, regardless of fluctuations in exchange rates or fuel prices.

Award winning Responsible Tourism

We feel strongly that all our holidays should benefit local communities, protect the environment and respect local traditions, religion and heritage. You can read more about the charities we support and our Responsible Tourism commitments and initiatives on the following page or at www.mountainkingdoms.com.

Genuine small group travel

Almost all of our holidays have a maximum group size of just 12, plus leader. This provides more contact with your leader, readier access to off-the-beaten-path areas, greater interaction with local communities and a reduced environmental impact.

Loyalty Discount

If you have previously travelled with us we recognise your loyalty with a discount on future trips.

Booking your holiday - it couldn't be easier

Once you've chosen your Mountain Kingdoms holiday you can book online, call the office or complete and post a booking form which can be found in our brochure or downloaded from our website. If you would like to hold a place on one of our trips, whilst you make up your mind, please give us a call to make a provisional booking. This is a no-obligation, no-cost booking and we will hold your place until space comes under pressure or we need your decision.

Comprehensive information

When we receive your booking we send you a full trip dossier which contains details of visas and vaccinations required, a suggested gear and clothing list and lots of useful information. In fact, everything you need to know to give you peace of mind and allow you to prepare for your trip of a lifetime.



RESPONSIBLE TOURISM STATEMENT CLIMATE EMERGENCY PLAN



For over 33 years, Mountain Kingdoms has been offering people the chance to visit amazing places on this extraordinary planet. We now offer trips to all corners of the world, but we are conscious that inevitably our holidays have a detrimental impact on the world around us, and we want to do all we can to reduce our carbon emissions. We are a signatory to Tourism Declares a Climate Emergency, along with a growing number of like-minded, reputable tour operators. For more information, please visit www.tourismdeclares.com

From 2020 onwards, we will be focusing on how we can reduce the carbon emissions that our holidays produce, and how to counterbalance this carbon by supporting carbon offset measures. Here are some of our current and future plans to minimise the impact of our business as a whole:

Carbon Offsetting

Already doing:

- ✓ We have been offsetting carbon since 2007, but will be increasing our donations to the [Ecoan tree planting project](#) in Peru this year. This is with a trusted partner where the funds go directly to a project where the community plants trees on its own land.

Will do:

- ✓ We are working on making our carbon offsetting more accurate and targeted.
- ✓ In future, we will add to that a further estimate for carbon produced by hotels, local road travel, trains and internal flights to arrive at a carbon offset sum for each trip we operate.
- ✓ Carbon offsetting will be included in our holiday prices. For our Flight Inclusive holidays it will include the international flight and any emissions produced by inland travel and accommodation. Our Land Only prices will include the cost of offsetting emissions caused by inland travel and accommodation.

Reducing Carbon Emissions

Already doing:

- ✓ We already offer the majority of our customers a free filtered water bottle which means they can instantly cut down on their single-use plastic consumption. This will be an ongoing project.
- ✓ We already predominantly use locally owned hotels, but will continue to ensure that, where possible, we use these rather than multinational chains.
- ✓ We have joined the Tourism Declares a Climate Emergency initiative to stand alongside like-minded travel companies, to work together to initiate best practices to make tourism as sustainable as possible.

Will do:

- ✓ We will re-evaluate our flights to make sure we are using the most fuel efficient airlines with the youngest fleets and, where possible, direct flights for each trip.
- ✓ We will stop offering unnecessary optional flights – for example our Everest sightseeing trip.
- ✓ We will eliminate unnecessary staff flights wherever possible.
- ✓ We will look at minimising internal flights.
- ✓ We will be asking all our worldwide agents and suppliers to look at their own carbon footprint and encourage them to reduce it.
- ✓ We will promote our more low impact trips to give customers an informed choice.

As part of our wider commitment to Responsible Tourism, we will continue to support a number of charities with whom we have had a long standing relationship over many years. These include: Shiva Charity in Nepal (Ginette Harrison School), Simien Mountains Mobile Medical Service and Porter Welfare, as well as setting aside a sum for emergency disaster relief should the need arise.

